



### APPLICATIONS - measuring of barometric pressure at:

- warehouses
- manufacturers
- air-conditioned rooms
- weather stations

Transmitter is equipped with absolute pressure sensor of high accuracy. Transmitter contains a microprocessor based control circuitry in a durable plastic case with connection terminals and sensors. Output range is user adjustable. Large dual line LCD is an advantage. Display is possible to switch off. Computerized design ensures temperature compensation of the pressure sensor and fail indication. State-of-the-art absolute pressure sensor ensures excellent long term stability.

Display reading and pressure output is user selectable in these units: hPa, kPa, mbar, mmHg, inHg, inH<sub>2</sub>O, PSI, oz/in<sup>2</sup>.

### TECHNICAL PARAMETERS

Maximum measuring range:	600 to 1100 hPa
Output setting from the manufacturer:	800 to 1100hPa
Accuracy:	±[1.3hPa+0.06% from adjusted output span] at 23°C from 800 to 1100hPa
Operating temperature range:	-30 to +80°C
Operating temperature range of LCD display:	readable to +70°C, it is recommended to switch OFF the LCD over +70°C
Output range:	user adjustable from the PC
Power:	<b>9-30Vdc</b> transmitter with 4-20mA output <b>15-30Vdc</b> transmitter with 0-10V output, maximum consumption 20mA
Dimensions (W x H x D):	89 x 98 x 39.5 mm
Protection:	IP54
Warranty:	two years

### AVAILABLE BAROMETER MODELS:

- T2114** - barometric pressure sensor with 4-20mA output
- T2214** - barometric pressure sensor with 0-10V output

Output is adjusted to 800-1100hPa range from the manufacturer. Output range is user adjustable from the PC by means of the optional cable SPO03 - see below. Free configuration program for transmitter adjustment is ready to download anytime. If different adjustment of output range is required, please specify required range.

Barometer enables to measure sea level pressure by setting of correction to altitude above sea level.

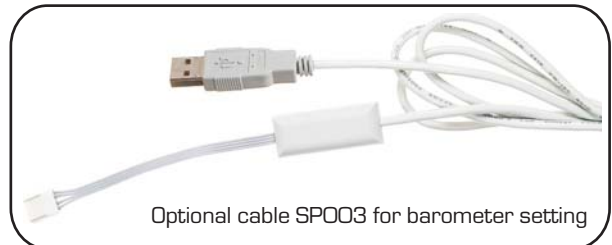
### Included accessory:

Traceable calibration certificate from the manufacturer, instruction manual. Calibration certificate with declared metrological traceability of etalons is based on requirements of EN ISO/IEC 17025 standard.

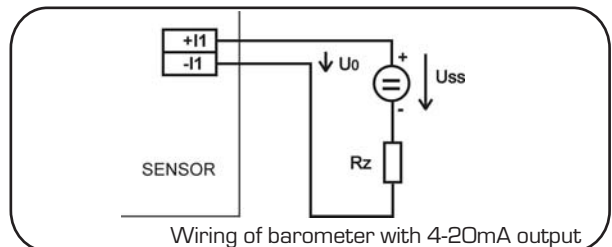
Free program TSensor for configuring of the transmitter is ready to download from [www.cometsystem.cz](http://www.cometsystem.cz).

### Optional accessory:

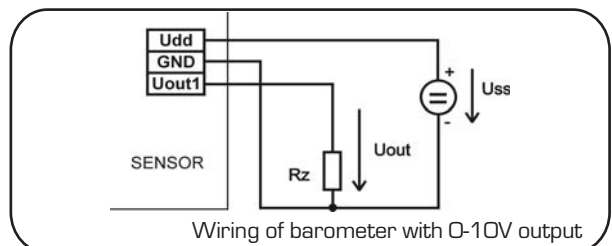
- SPO03** - cable for transmitter adjustment via USB port
- MD036** - self adhesive Dual Lock for easy installation
- SPO05** - tool for easy wire connection to terminals



Optional cable SPO03 for barometer setting



Wiring of barometer with 4-20mA output



Wiring of barometer with 0-10V output

Barometer is directly compatible with sixteen channel Comet data acquisition system MS.

Pxxxx Txxxx